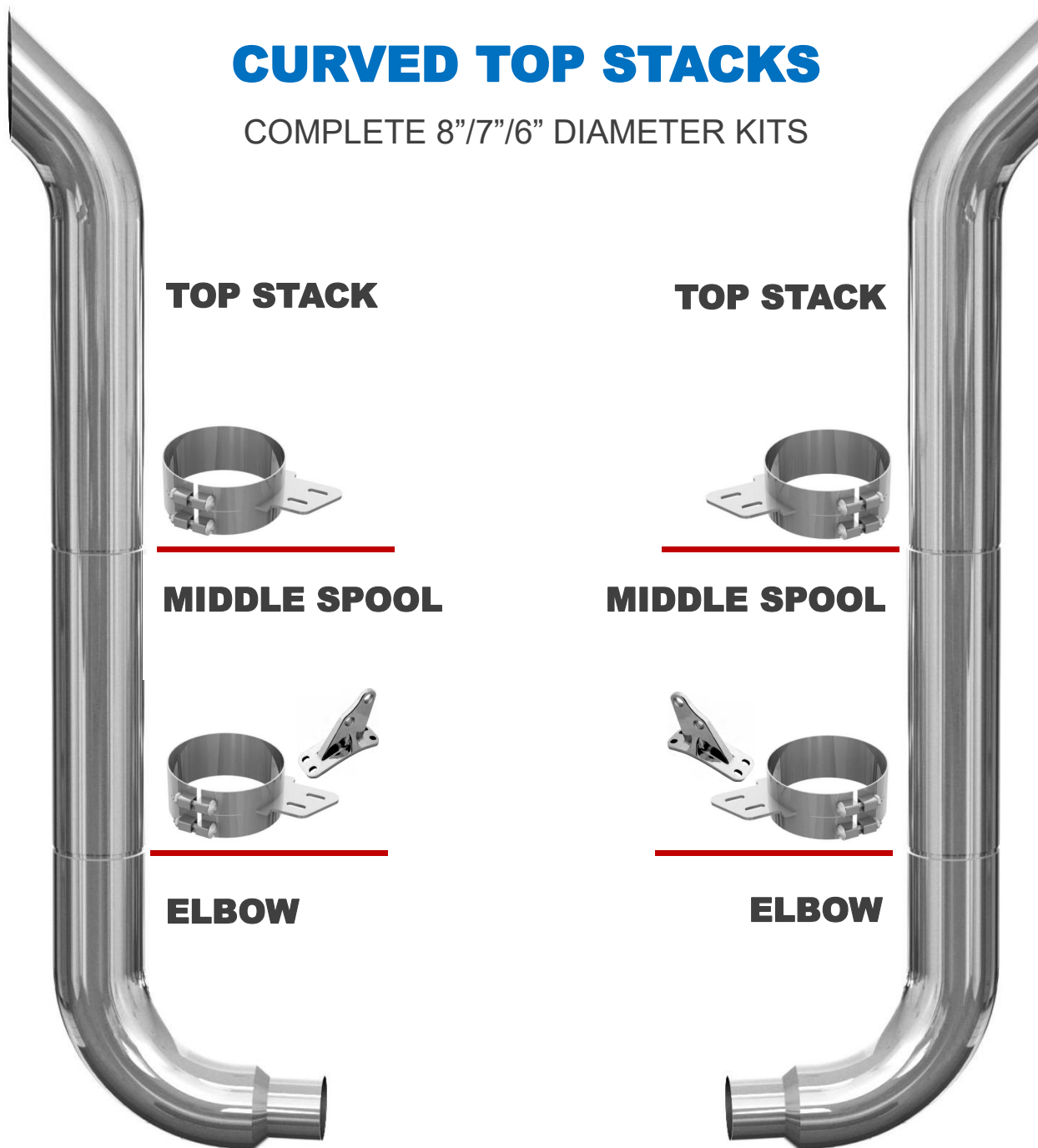


Semi truck Stack kit

Exhaust system for heavy trucks

CURVED TOP STACKS

COMPLETE 8"/7"/6" DIAMETER KITS



TECHNICAL SPECIFICATIONS

MATERIAL

Chrome stainless steel

SOLD

As a kit or selected parts

2 x top stacks (52" or 60" high)

2 x middle spools (52" high)

2 x 90 degree elbow (reduce to 5")

2 x angle brackets

4 x angle clamps

8 x black bushings

90 degree elbows are reduced to 5"

All 8" /7" /6" elbows are reduced to 5" in order to connect 5" Y pipe

Clamps and brackets are Chrome stainless steel, same finishing as stack kits

Exhaust system for heavy trucks

BULLHORN TOP STACKS

COMPLETE 8"/7"/6" DIAMETER KITS

TOP STACK



TOP STACK



MIDDLE SPOOL



MIDDLE SPOOL



ELBOW

ELBOW

TECHNICAL SPECIFICATIONS

MATERIAL Chrome stainless steel
SOLD As a kit or selected parts
2 x top stacks (52" or 60" high)
2 x middle spools (52" high)
2 x 90 degree elbow (reduce to 5")
2 x angle brackets
4 x angle clamps
8 x black bushings

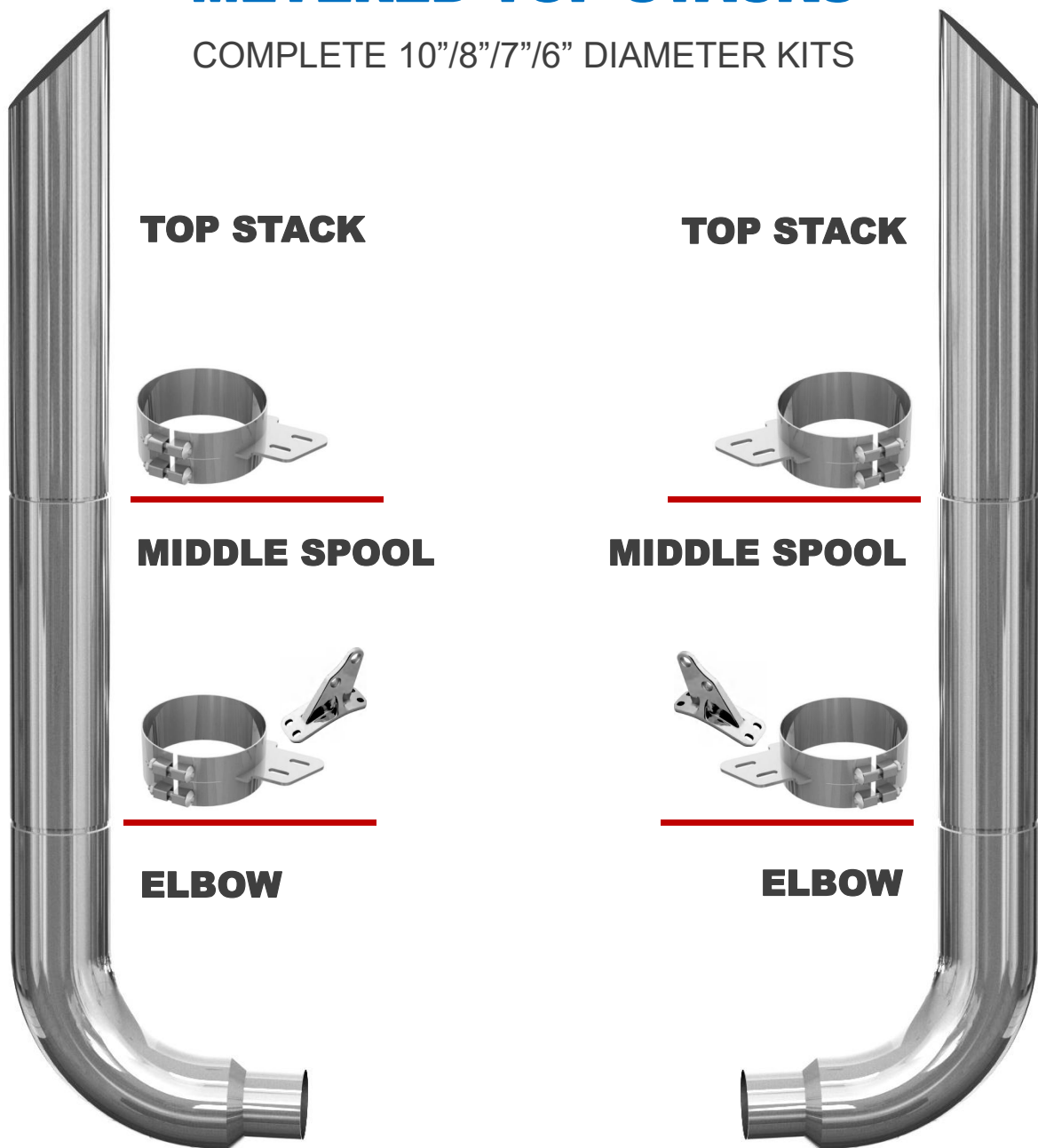
90 degree elbows are reduced to 5"
All 8" /7" /6" elbows are reduced to 5" in order to connect 5" Y pipe

Clamps and brackets are Chrome stainless steel, same finishing as stack kits

Exhaust system for heavy trucks

METERED TOP STACKS

COMPLETE 10"/8"/7"/6" DIAMETER KITS



TECHNICAL SPECIFICATIONS

MATERIAL Chrome stainless steel
SOLD As a kit or selected parts
2 x top stacks (52" or 60" high)
2 x middle spools (52" high)
2 x 90 degree elbow (reduce to 5")
2 x angle brackets
4 x angle clamps
8 x black bushings

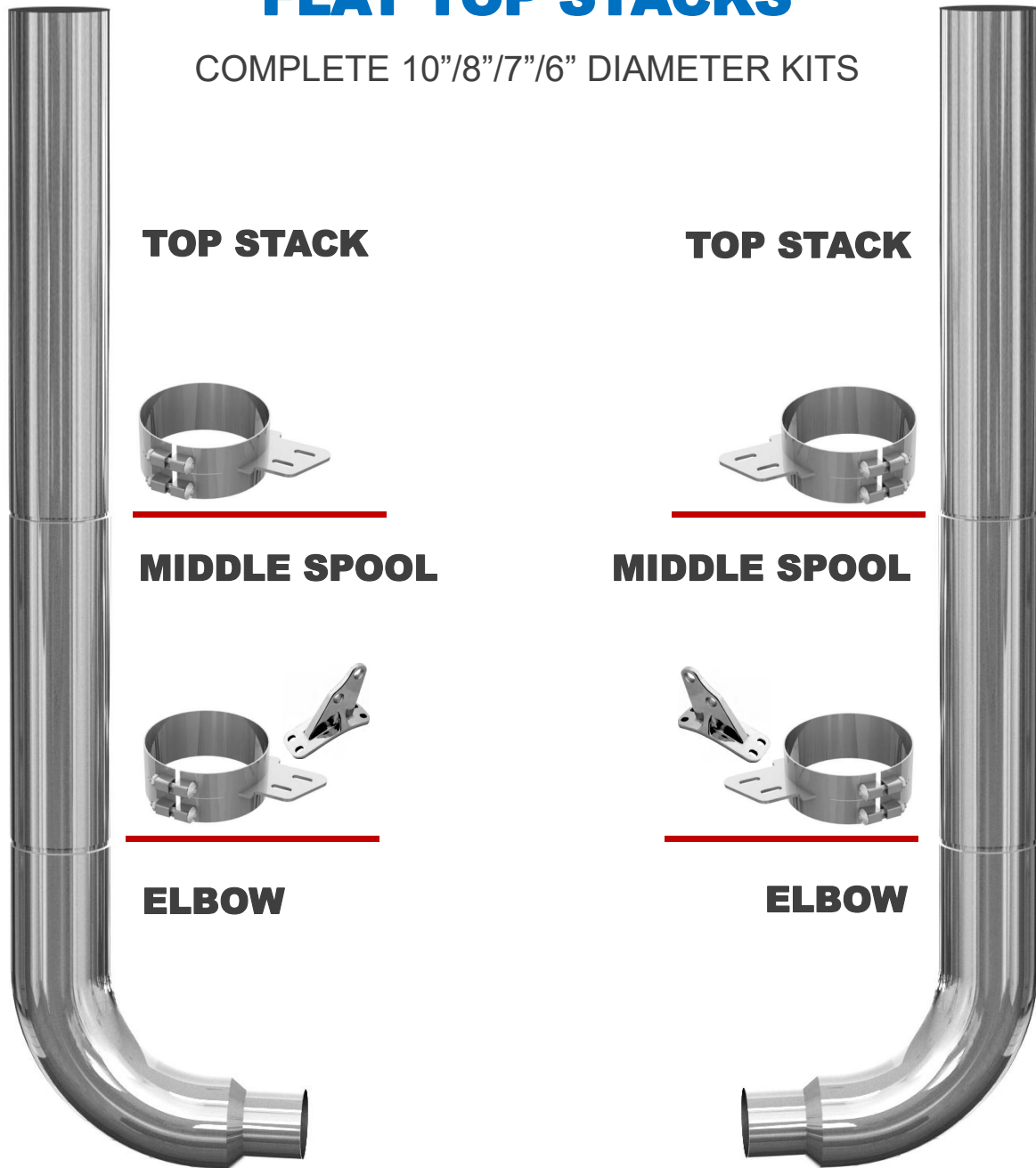
90 degree elbows are reduced to 5"
All 10" /8" /7" /6" elbows are reduced to 5" in order to connect 5" Y pipe

Clamps and brackets are Chrome stainless steel, same finishing as stack kits

Exhaust system for heavy trucks

FLAT TOP STACKS

COMPLETE 10"/8"/7"/6" DIAMETER KITS



TOP STACK

TOP STACK

MIDDLE SPOOL

MIDDLE SPOOL

ELBOW

ELBOW

TECHNICAL SPECIFICATIONS

MATERIAL Chrome stainless steel
SOLD As a kit or selected parts
2 x top stacks (52" or 60" high)
2 x middle spools (52" high)
2 x 90 degree elbow (reduce to 5")
2 x angle brackets
4 x angle clamps
8 x black bushings

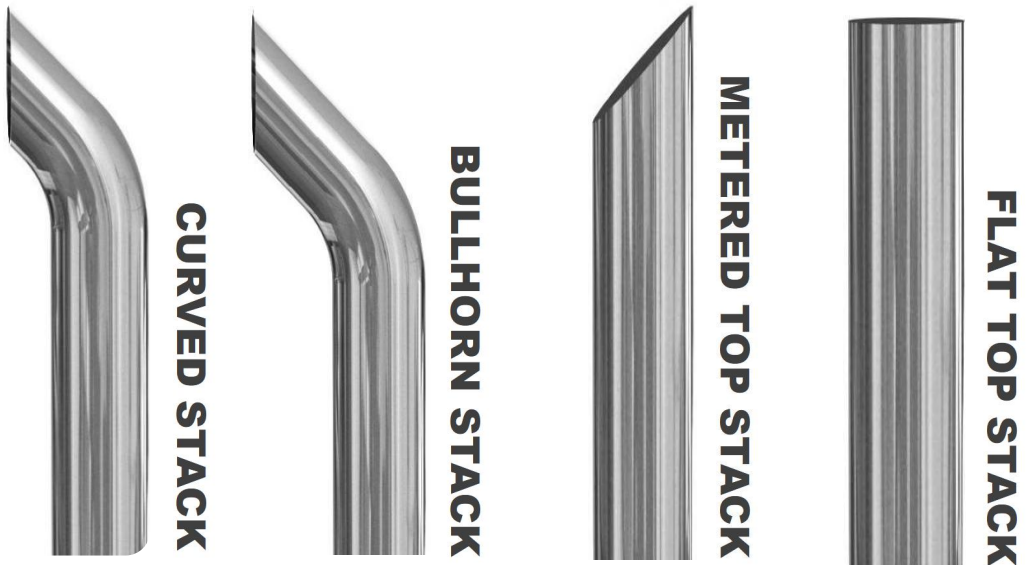
90 degree elbows are reduced to 5"
All 10" /8" /7" /6" elbows are reduced to 5" in order
to connect 5" Y pipe

Clamps and brackets are Chrome stainless steel, same
finishing as stack kits

Exhaust system for heavy trucks

52" / 60" TOP STACKS

SELECT THE TOP STACKS YOU NEED



10"

8"

7"

6"

TECHNICAL SPECIFICATIONS

MATERIAL
SOLD

Chrome stainless steel
Selected parts
Top stacks (52" or 60" high)
Pack in wooden boxes or
customized packaging

Wall thickness: 1.5mm or 2mm

Stack height: 52" or 60"

Packing: wooden box or carton box

52" / 55" MIDDLE SPOOLS

SELECT MIDDLE SPOOLS



10"

8"

7"

6"

TECHNICAL SPECIFICATIONS

MATERIAL
SOLD

Chrome stainless steel
Selected parts
Middle spools (52" or 55" high)
Pack in wooden boxes or
customized packaging

Wall thickness: 1.5mm or 2mm

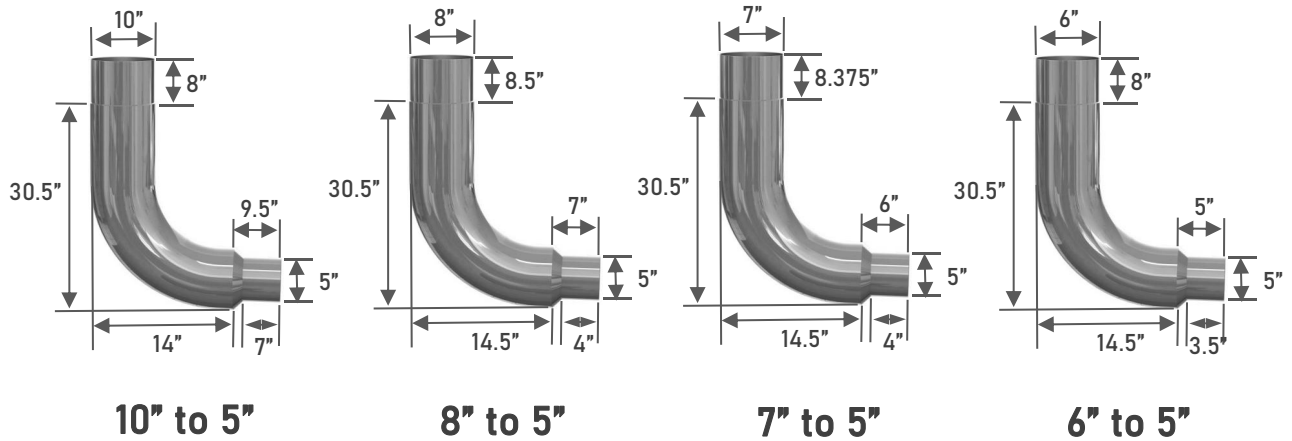
Spool height: 52" or 55"

Packing: wooden box or carton box

Exhaust system for heavy trucks

90 DEGREE ELBOW

SELECT THE ITEMS YOU NEED



10"

8"

7"

6"

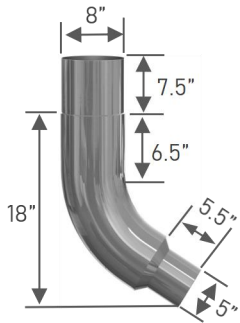
TECHNICAL SPECIFICATIONS

MATERIAL	Chrome stainless steel	Wall thickness:	1.5mm	or	2mm
SOLD	Selected parts 90 degree elbow reduced to 5"	Packing:	wooden box	or	carton box
	Pack in wooden boxes or customized packaging				

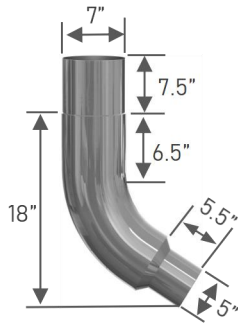
Exhaust system for heavy trucks

45 DEGREE ELBOW

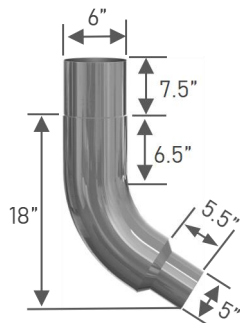
SELECT THE ITEMS YOU NEED



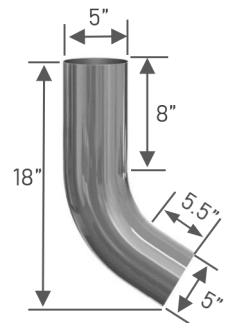
8" to 5"



7" to 5"



6" to 5"



5"

8"-5"

7"-5"

6"-5"

5"

TECHNICAL SPECIFICATIONS

MATERIAL
SOLD

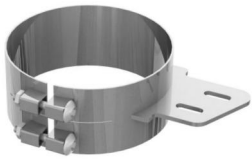
Chrome stainless steel
Selected parts
45 degree elbow reduced to 5"
Pack in wooden boxes or
customized packaging

Wall thickness: 1.5mm or 2mm
Packing: wooden box or carton box

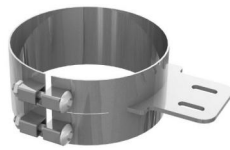
Exhaust system for heavy trucks

10" /8" /7" /6" CLAMPS AND BRACKETS

SELECT THE ITEMS YOU NEED



Angle clamp



Straight clamp



Angle bracket



Straight bracket

10"

8"

7"

6"

TECHNICAL SPECIFICATIONS

MATERIAL Chrome stainless steel
SOLD Selected parts
Clamps and brackets
Pack in wooden boxes or
customized packaging

The brackets are available for all universal stack kits
from 6" to 10"